

Downloading the Online Search client program

We now have a URL for using the Butler County Online Search

Please access this url from the "Address" box of your browser:

["ftp://ftp.acsgrm.com/landmarc/cli34017.exe"](ftp://ftp.acsgrm.com/landmarc/cli34017.exe)

Depending on the browser you use, you will get some variation of a message that asks if you want to "Open" the file or "Download" it. Some browsers use "Run from current location" instead of "Open". Select "Open" or "Run from current location" or the equivalent. This should download and start the internet Search program.

Using the internet version of Search, you will initially get a Login screen. The first time you use this it will present a message stating that you need to download imaging components. The message box will offer possible "Yes" or "No" responses: select "Yes". Progress of the download will be indicated by messages in the status bar at the bottom of the Login screen. Note it is necessary to do this download only the very first time you use the program.

If you are using a slow Internet connection, the download may take up to 12 minutes or more. About halfway through, you may see a message that offers an option to "Continue" or "Abort". You should select "Continue". If you have DSL or some other high-speed connection (such as cable), this should not be a problem, and the download should take probably 30 seconds or less.

Once the download is complete you should be able to click the "Login" button and proceed to the familiar Search program.

Setting the resolution to 1024 x 768

The Online Search program requires a screen resolution of at least 1024 x 768. If your monitor is set to a resolution smaller than this, you will see the upper left-hand quadrant of the Search program. In order to see the full screen as you would in the County office, you must change the resolution of your monitor to 1024 x 768. The following instructions should help you do this.

First, when you activate the url for downloading the program, look for the following message in the middle of the right-hand side of the Login screen:

"This viewer requires a minimum monitor resolution of 1024 x 768."

This message appears when the login program detects a monitor resolution less than 1024 x 768. The monitors on most systems these days are easily capable of showing this resolution, and the setting is easy to change using the standard Windows tool for managing your monitor.

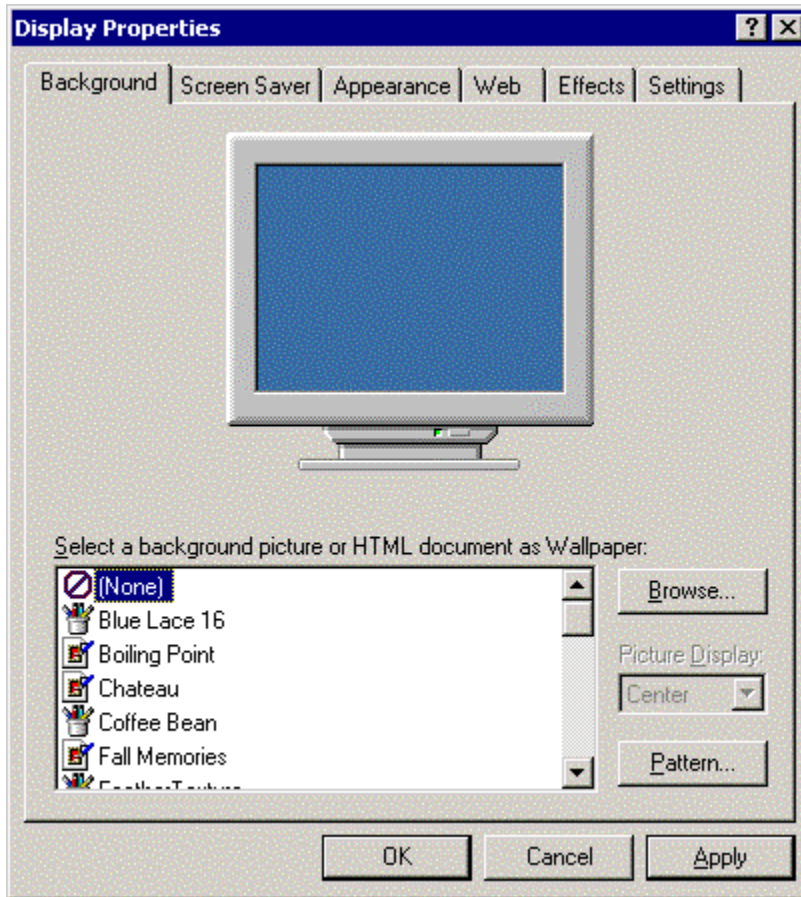
(Below, I am pasting images from this Windows tool copied from my computer into this document. Note that the images from my system may be a little different from the corresponding ones on other systems; but they should --for the most part-- be similar enough for the following instructions to make sense.)

It is probably a good idea to read through the entire set of steps before doing anything just so you pretty much know what to expect before it's right upon you. The standard Windows Display Properties tool is what we describe below.

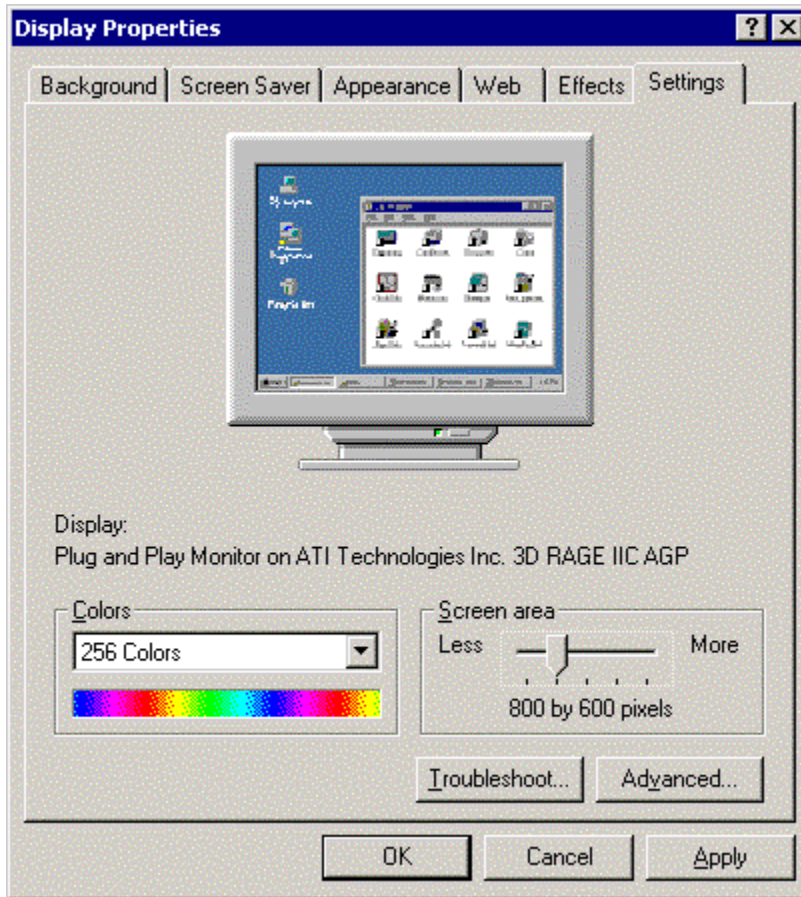
Preparation. Please exit all programs before starting these actions to change your screen resolution.

First. RIGHT - click on the desktop background (that is, on blank desktop, not on any icon). You should see a little floating menu of options. There should be an option called "Properties" at the bottom of the list; select this option.

This should bring up a window that looks similar to

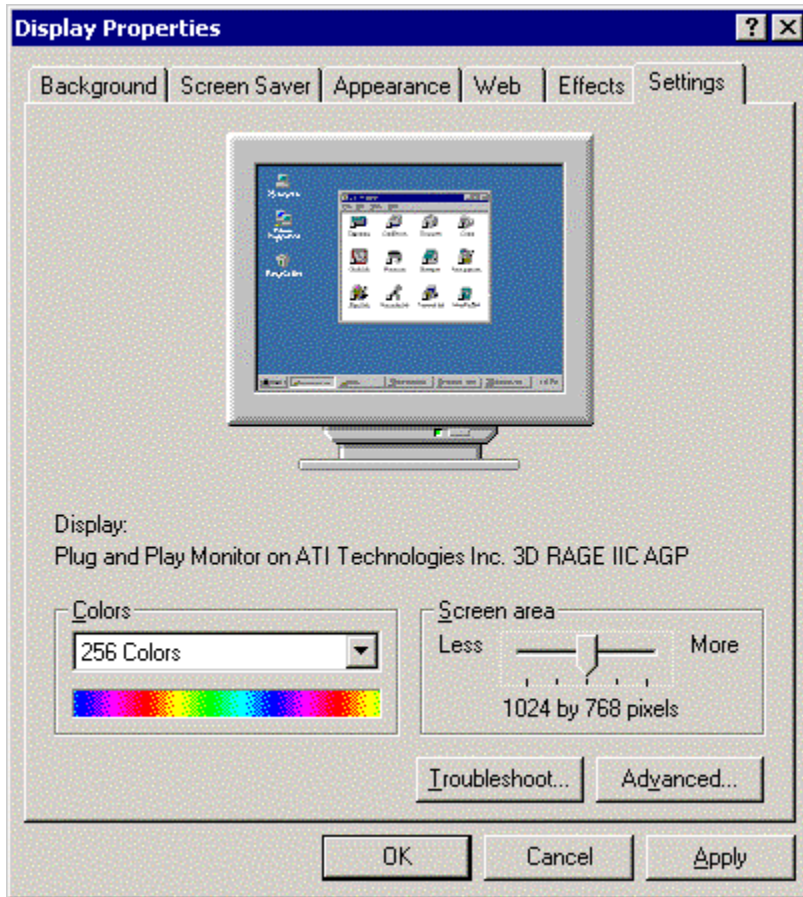


Select the "Settings" tab from the group of tabs at the top of this window. You should see another window similar to this:



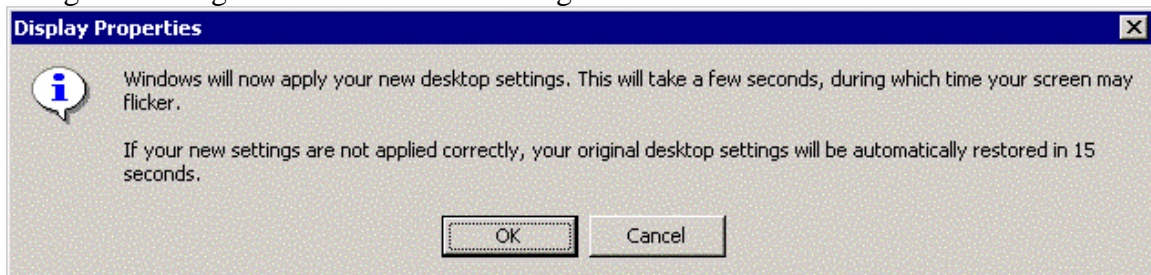
Look for the grouping called "Screen area" in the lower right-hand part of the window. This grouping should have a "Less--More" line with a slider control in between, similar to the picture above. We want to place the mouse pointer on the slider control and move it to the right toward the "More" end of the line until the description below the line reads "1024 by 768 pixels" or greater. (There is probably no reason to go further than "1024 by 768". Note also if the slider is already as far right as possible, and the resolution still is less than "1024 by 768", then the monitor cannot display at this higher resolution. Stop here and let us know if this is the case.)

The change should look similar to this:



The basic effect you will see is that the icons are smaller and placed more to the left and top, with additional empty desktop space to the right and lower parts of the screen.

Next click the "Apply" button. Depending on what version of Windows you have, you will get a message box that looks something like this:



Click 'Ok' and wait for the settings to take effect. Click "Ok" again to accept the changes.